

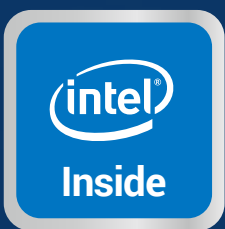
asustor

AS7010T



A 10-Bay Premium NAS Server Designed for Demanding Enterprise and Multimedia Applications

- Powerful Intel Core i3 dual-core processor/Intel Core i5 quad-core processor ensures top-notch reliability and stability
- Windows ACL support combined with Windows AD infrastructure enhances management efficiency for business applications
- Support for RAID 0, 1, 5, 6, 10 and hard drive hot swapping
- 10GbE Ethernet card and memory expansion slots allow for further expansion as the need arises
- New disk tray locks ensure that hard disks will not be accidentally ejected during operation
- SMB 2/3 support increases Windows networking performance by 30%-50%



2 Lan Ports

2 eSATA

3 USB 3.0

AES-NI

Expandable **MAX 16G**

HDMI™

S/PDIF

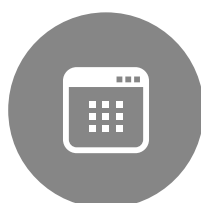
4K ULTRA HD



Performance
King



Boundless
Functionality



Intuitive
UI



Incredible
Value



3year
warranty

Supreme Stability and Security

Highly stable storage equipment is critical in enterprise environments. The AS7010T is equipped with a powerful Intel processor and 4GB of memory, providing stable and reliable operation. This combines with ADM's RAID storage technology and AES 256-bit encryption to provide efficient multi-user access and data security.



Enhanced Data Security While Maintaining Top-Flight Performance

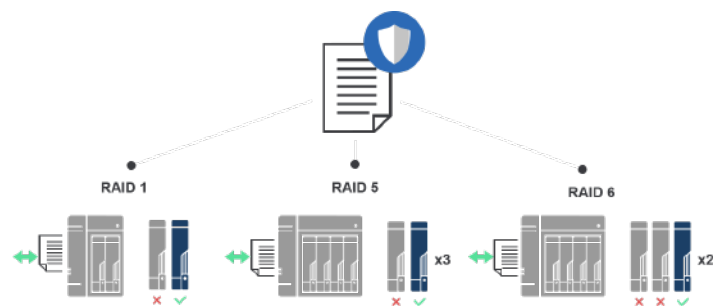
AS10/31/32/61/62/63/64/70 series devices utilize CPUs with built-in hardware encryption engines. This allows the system to maintain high speed data transfers even after enabling data encryption, while not greatly increasing the load on the CPU. This allows you to employ enterprise-class data encryption while maintaining first-rate system performance.

AS7010T non-encrypted/encrypted data transfer comparison table:

	Single Gigabit LAN		Single 10GbE LAN	
	Read (MB/s)	Write (MB/s)	Read (MB/s)	Write (MB/s)
Non-encrypted	112.86	112.50	514.46	749.31
Encrypted	112.63	112.32	510.54	536.54

Data Protection Starts with Storage

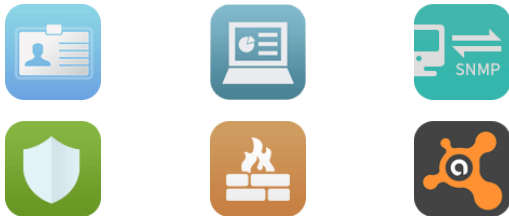
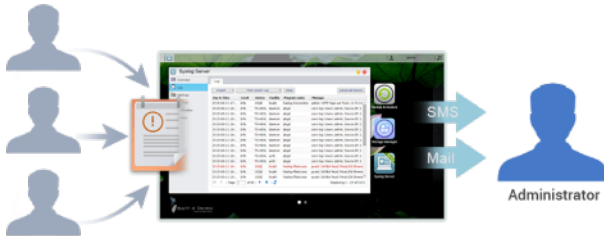
ASUSTOR understands that your data is priceless, therefore ASUSTOR NAS provides different RAID Volume options, giving your data various levels of protection from the moment it is first stored on the NAS. We recommend you plan your storage protection based on your NAS model and number of hard disks. Data protection has never been so simple.



	Single	JBOD	RAID 0	RAID 1	RAID 5	RAID 6	RAID 10
Minimum number of disks	1	2	2	2	3	4	4
Faulty Disks Tolerated	X	X	X	1	1	2	2
Increased System performance	X	X	V	X	V	V	V
Maximum use of Storage space	V	V	V	X	X	X	X

Efficient Management of Your Network Environment

ASUSTOR NAS integrates many network management tools including the DHCP server function which can automate IP assignments on your network. Furthermore, Syslog Server can be used to centrally aggregate system logs that are spread out over various network devices for storage and management. These functions allow IT administrators to efficiently manage equipment on enterprise networks, enhancing productivity.



AD + ACL



ADM features built-in Windows AD support. Once an ASUSTOR NAS has been successfully added to a Windows AD domain, AD users will then be able to use their own AD accounts to log in to and access the NAS.

Windows AD support combined with ACL allows IT professionals to use the familiar Windows user experience to quickly configure shared folder access rights for users and groups on an ASUSTOR NAS. Furthermore these settings can be applied to Samba, File Explorer, AFP, NFS, or WebDAV allowing businesses to maintain flexibility and security with regards to data access.

Batch Creation of ADM Accounts

Via ADM's batch creation function, you can quickly create multiple regular sequential user accounts (e.g., student numbers). With regards to irregular non-sequential account creation, you can enter account data into a text file (*.txt, *.csv) and then import it into ADM to create accounts.

Supporting LDAP Clients Centralized control now more convenient than ever

LDAP, also known as Lightweight Directory Access Protocol is mainly used for unified management of accounts and passwords. Using LDAP technology can more efficiently manage user authentications or computer resource permissions across the enterprise. ASUSTOR NAS originally only supported Microsoft's Windows Active Directory service. ADM 3.1 adds an LDAP client. Users can easily add an ASUSTOR NAS to their existing LDAP server providing easier ways to manage helps improve productivity.

Multi-Layered Protection from the Outside in

ASUSTOR NAS ensures data security by creating an in-depth data protection plan that protects your data from the outside in. Utilization of a multi-layered deployment scheme allows for the achievement of active network, system and data protection.

Network Attack Protection

- Firewall
- ADM Defender

Access Control

- File/Folder/App Isolated
- 2-Step Verification

Secured Data Transmission

- VPN connection
- SSL certificate connection
- Automatic logout

Internal Data

- MyArchive Offline Backup
- AES-256 folder encryption
- Anti-virus software



Evolved Network Defender

- Provides Auto Black List to block brute-force attack attempts
- Trusted List can prevent trusted IP addresses from being automatically blocked in the event of too many inadvertent login failures
- Black and White List can be defined by specific IPs, IP ranges, and geolocation

Comprehensive Backup Solutions

ASUSTOR NAS provides over 12 different backup options and is connected to a variety of public cloud storage services including Amazon S3, Dropbox, Google Drive, OneDrive, Box.net, HiDrive, Ralus, WonderBox, xCloud and CrashPlan. You can also use FTP Explorer, USB external hard drive enclosures, external hard drives and local backup to ensure proper backup for your data. No matter if you are using Windows, Mac or Linux, ASUSTOR provides the proper tools for your backup needs.

MyArchive cold backup technology turns NAS hard disks into removable storage archives. Directly insert a MyArchive hard disk into the NAS to easily access, backup and share terabytes of content.

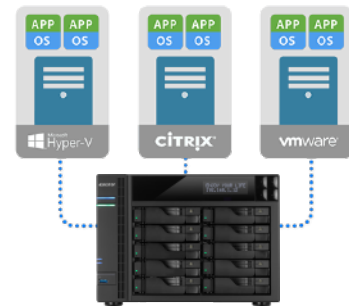


Exclusive MyArchive storage technology

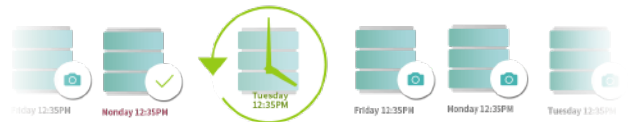
MyArchive provides unlimited storage for your cold data for allowing for flexible storage management. MyArchive allows users to take less frequently accessed data or highly confidential data and store it independently on a hard disk. When not in use, MyArchive disks can be ejected from the NAS and separately stored, increasing the life of hard disks, saving power and most importantly providing added security for critical data. Every ASUSTOR NAS is able to create and read MyArchive hard disks. Users can take their created MyArchive hard disks to any other another ASUSTOR NAS for direct access. This provides a significant boost in transfer speeds when compared with file transfers over a network.



Integrates a Variety of Enterprise Applications



ASUSTOR's snapshot technology provides almost instantaneous creation of snapshots. It saves a significant amount of time and storage capacity when compared with traditional LUN backups. Should files become damaged or corrupted, the simple and intuitive interface allows administrators to quickly restore data, completing disaster recovery in the fastest time possible and providing uninterrupted service.



Enterprise Surveillance System

The powerful ASUSTOR NAS provides optimal reliability for home and SMB users looking to set up a surveillance system. 4 free camera channels are offered, making it an extremely cost-effective surveillance solution for users with smaller demands. For users with larger demands, the number of camera channels can be expanded up to 36 via purchasable camera licenses. After installing Surveillance Center and its corresponding mobile app AiSecure, users will also be able to stream live surveillance feeds to their smartphones while on the go, keeping an eye on their most valued assets from anywhere.

5 Steps 60 Sec

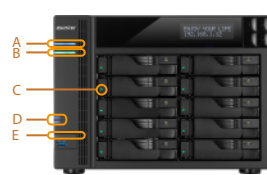
- Start quick installation wizard
- Automatic camera search
- Add cameras with just one click
- Configure video format
- Configure recording schedule



Hardware Specification

AS7010T

Processor	AS7010T-i3: Intel® Core i3 3.5GHz Dual-Core Processor AS7010T-i5: Intel® Core i5 3.0GHz Quad-Core Processor
Memory	AS7010T-i3: 2GB SO-DIMM DDR3 AS7010T-i5: 8GB SO-DIMM DDR3
Internal Disk	10 x SATA3 6Gb/s; 3.5"/2.5" HDD/SSD
LAN Port	Gigabit Ethernet x 2
External Device Interface	USB 3.0 x 3, USB 2.0 x 2, eSATA x 2
Dimensions (HxWxD)	215.5(H) x 293(W) x 230(D) mm
Weight	7.4 kg / 16.3 lb
Power	Internal Power Supply: 350W
Operation/Disk Hibernation /Sleep Mode(S3)	99.2W / 54.4W / 1.97W
Disk Hibernation	Single disk, JBOD, RAID 0 / 1 / 5 / 6 / 10
HD Display	HDMI 1.4a x 1



- A. Power LED Indicator
- B. System Status LED Indicator
- C. Hard Disk LED Indicator
- D. Network LED Indicator
- E. USB LED Indicator

- A. Reset Button
- B. HDMI Port
- C. RJ45 & USB 3.0 Port
- D. RJ45 & USB 2.0 Port
- E. eSATA Port
- F. S/PDIF Port
- G. K-lock
- H. Power Supply
- I. System Fan
- J. Expansion Slot

Software & Features

Operating System

- ADM 3.2 Onwards
- Supports Online Firmware Updates
- Built-in App Central for Various Apps

Supported OS

- Windows XP, Vista, 7, 8, 10, Server 2003, Server 2008, Server 2012, Server 2016
- Mac OS X 10.6 Onwards
- UNIX, Linux, BSD

Access Control

- Maximum Number of Users: 16384
- Maximum Number of Groups: 512
- Maximum Number of Shared Folders: 512
- Maximum Number of Concurrent Connections: 2048
- Supports Windows Active Directory
- Supports Windows Active Directory / LDAP

File Explorer

- Web-based File Management
- ISO File Mounting
- Share Links
- Task Monitor
- Browse Files on Local PC
- Thumbnail Previews
- Data Access via External Optical Drive
- Supports video playback

System Administration

- Log Type: System Log, Connection Log, File Access Log
- Real-time Online User Monitor
- Real-time System Monitor
- User Quota
- Virtual Drive (ISO Mounting, Maximum 16)
- UPS Support

Storage Management

- Support Multiple Volumes with Spare Disks
- Volume Type: Single disk, JBOD, RAID 0, RAID 1, RAID 5, RAID 6, RAID 10
- Support for Online RAID Level Migration
- Support for Online RAID Capacity Expansion

Disk Management

- Scheduled Bad Block Scans
- Scheduled S.M.A.R.T Scans

External Devices

- Supports USB/eSATA External Storage Devices
- USB Wi-Fi Dongle Support
- Bluetooth Dongle/Speaker Support
- USB Printer Support
- USB DAC/IR Receiver/Keyboard/Mouse Support
- CD ROM Drive/DVD ROM Drive/Blu-Ray ROM

Energy Control

- Configurable Disk Hibernation and Sleep Mode Wait Time
- Configurable Time Period for Sleep Mode Activation
- Automatic Sleep

Supported Browsers

- Internet Explorer 11 Onwards, FireFox, Chrome, Safari, Microsoft Edge

Network

- TCP/IP (IPv4 & IPv6)
- Jumbo Frame (MTU)
- VLAN
- EZ Connect
- Wireless Network
- DDNS 和 EZ-Router
- Supports Wake-on-LAN (WOL)

Network Protocols

- CIFS / SMB, SMB 2.0 / 3.0, AFP, NFS, FTP (Unicore Supported), TFTP, WebDAV, Rsync, SSH, SFTP, iSCSI/IP-SAN, HTTP, HTTPS, Proxy, SNMP, Syslog

Security

- AES 256-Bit Encryption
- Firewall: Prevent Unauthorized Access
- Alert Notifications: E-mail, SMS
- Encrypted Connections: HTTPS, FTP over SSL/TLS, SSH, SFTP, Rsync over SSH
- Built-in Hardware Encryption Engine:
- RAID Scrubbing: detects the integrity and consistency of RAID 5 and RAID 6 drive data

Backup Solutions

- Rsync (Remote Sync) Backup
- Cloud Backup
- FTP Backup
- External Backup

EZ Sync Manager

- Automatically synchronizes files between a PC and NAS
- Can restore previous versions of files
- Supports file sharing
- AiData now supports accessing EZ Sync files

Network Recycle Bin

- Share Folder-based
- Maintains Original Directory Structure and File Permission
- One-click Restore
- Supports Scheduled Emptying
- Filtering Rules

Supported Languages

- Deutsch, English, Français, Italiano, Nederlands, Русский, 日本語, 한글, 简体中文, 繁体中文, Česká, Polski, Svenska, Dansk, Norsk, Suomi, Português, Türkçe, Español, Magyar

File System

- Internal Disk: EXT4
- External Disk: FAT32, NTFS, EXT3, EXT4, HFS+, exFAT

ACL

- Provides both Windows ACL and Linux
- ACL permission configuration methods
- Can enable Windows ACL for specific shared folders
- Comprehensive support for Windows' 13 types of advanced permission settings
- Can view Windows ACL permission settings from within ADM
- Supports local users and groups
- Exclusive permission reset function allows users to quickly restore default permissions

SSD Cache

- SSD-like performance with traditional hard drives
- supports read-only access and read-write cache mode
- Supported Models: AS31/32/50/51/61/62/63/64/70 series

iSCSI/IP-SAN

- Maximum Targets: 256
- Maximum LUNs: 512
- Maximum Snapshot Versions of a Single LUN: 256
- Target Masking
- LUN Mapping
- ISO File Mounting
- Supports MPIO
- Persistent (SCSI-3) Reservations

Sever

- VPN sever, SNMP sever, RADIUS sever, Syslog sever, Mail sever, DHCP sever, Web sever, FTP sever, Print sever, Rsync sever

Featured Apps

- Antivirus
- ASUSTOR Portal (HDMI Local Output)
- Download Center
- FTP Explorer
- DataSync for CloudDrive
- iTunes Server
- VirtualBox
- RADIUS Server
- Mail Server
- LooksGood
- Photo Gallery
- SoundsGood
- Teasey
- Linux Center
- Surveillance Center
- UPnP Media Server
- VPN Server
- VPN Client

Mobile Apps

- AiMaster
- AiFoto
- AiMusic
- AiVideo
- AiData
- AiDownload
- AiSecure
- AiRemote



ASUSTOR Inc.

3F, No.136, Daye Rd., Beitou Dist., Taipei City 112, Taiwan Tel: +886 2 7737 0888 www.asustor.com

Designs and specifications are subject to change without notice.

© ASUSTOR Inc. ASUSTOR and all other ASUSTOR product names are trademarks or registered trademarks of ASUSTOR Inc. All other product and company names mentioned herein are the trademarks of their respective owners.

Dealer Seal